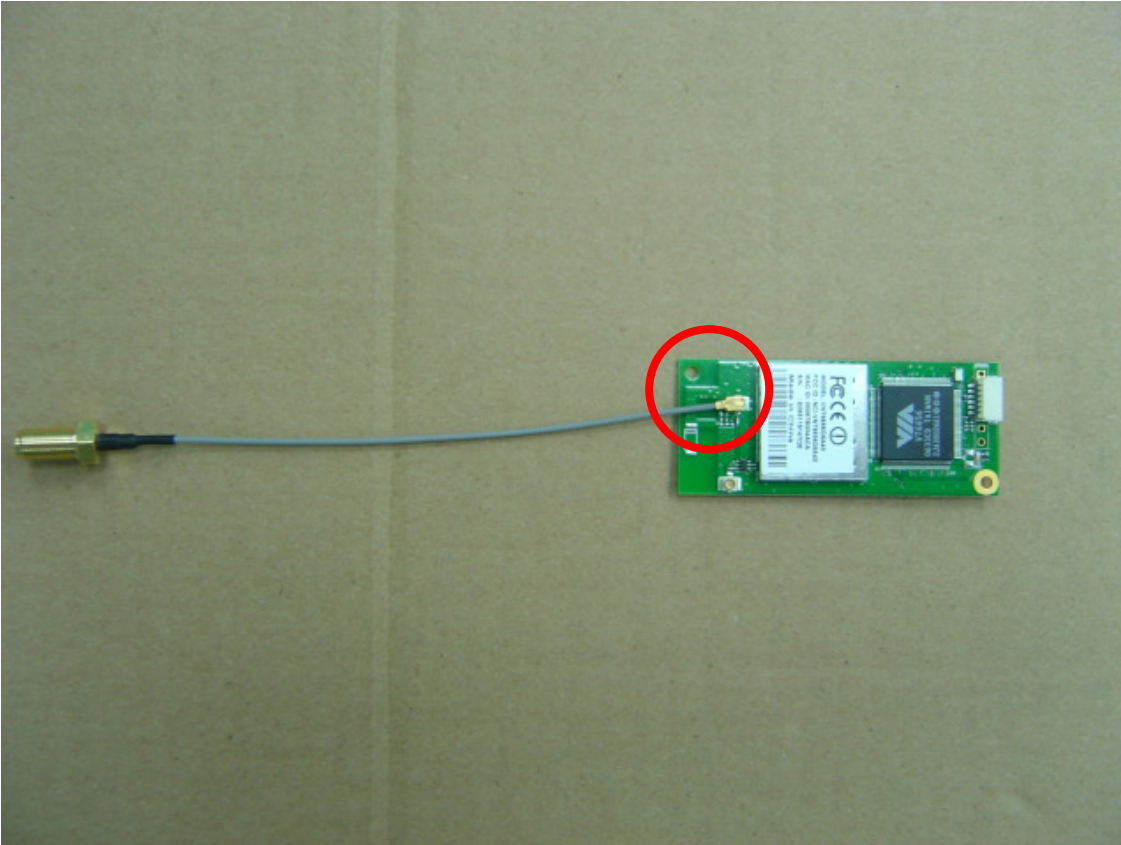
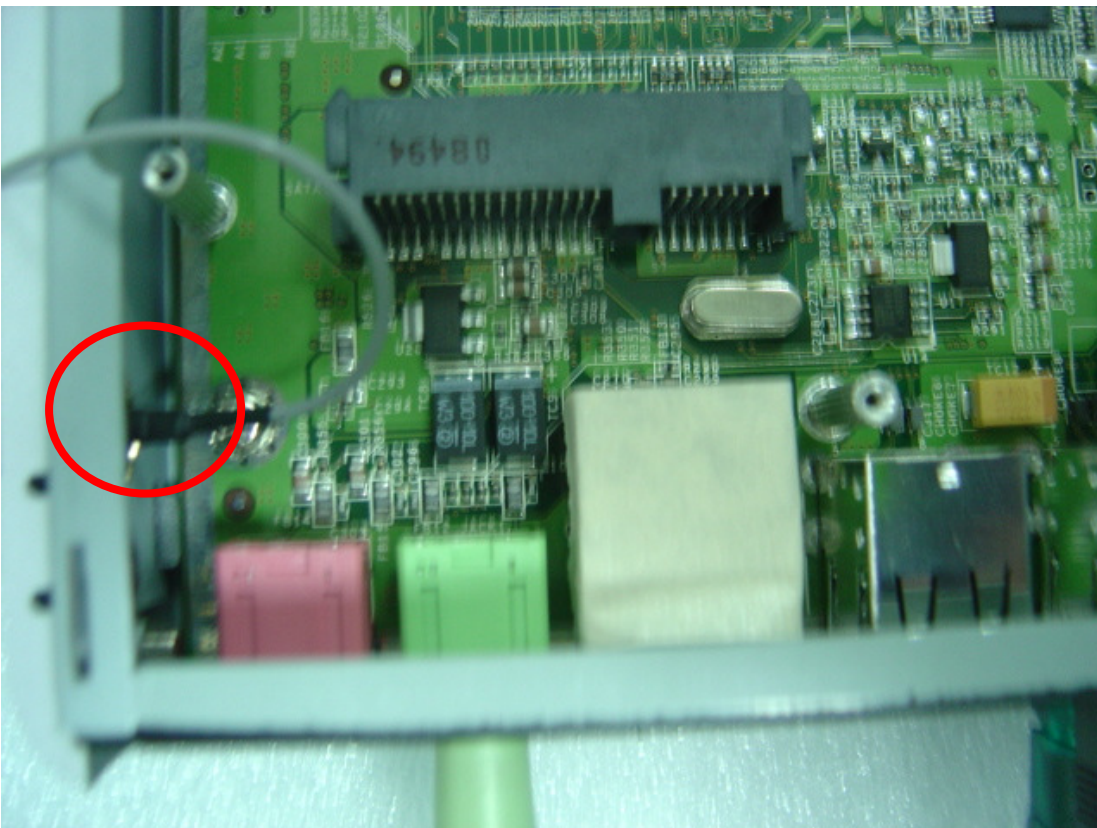


# TK-38xx-How to install the USB WLAN

1. Assemble the antenna cable as below picture:



2. Make the antenna connector cross the chassis as below picture:

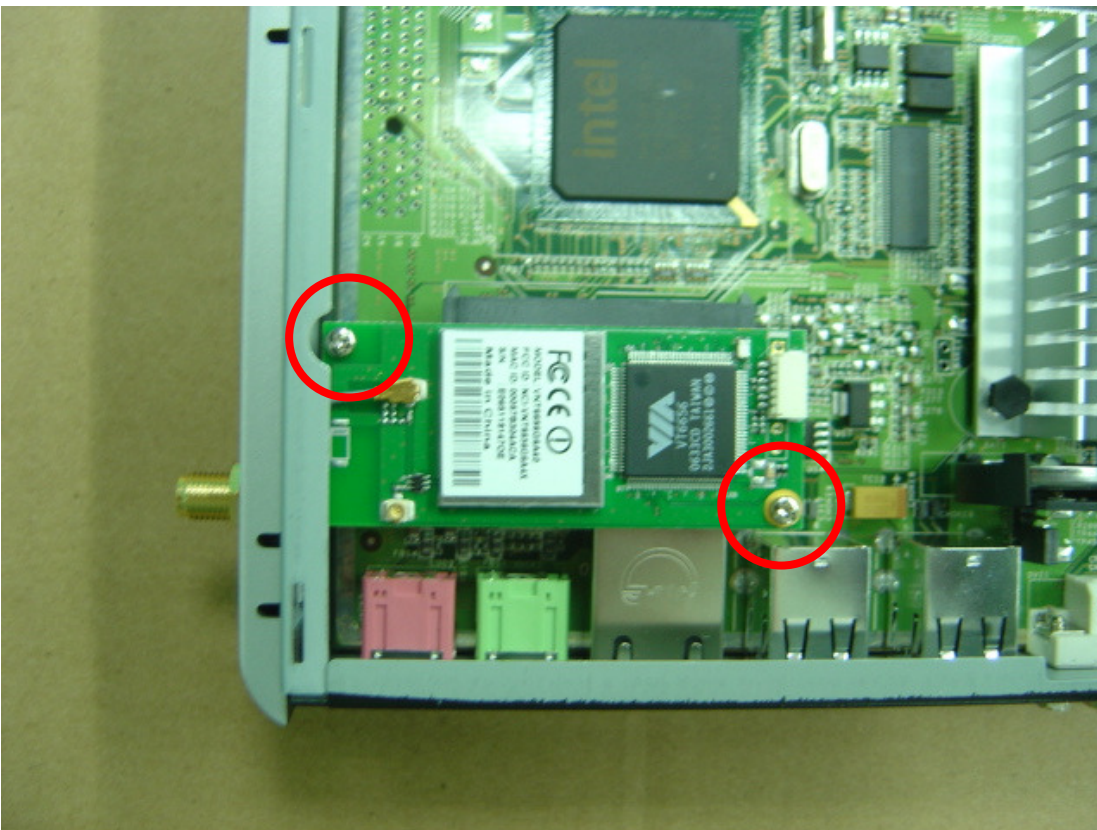


# TK-38xx-How to install the USB WLAN

3. Screw the antenna connector as below picture:



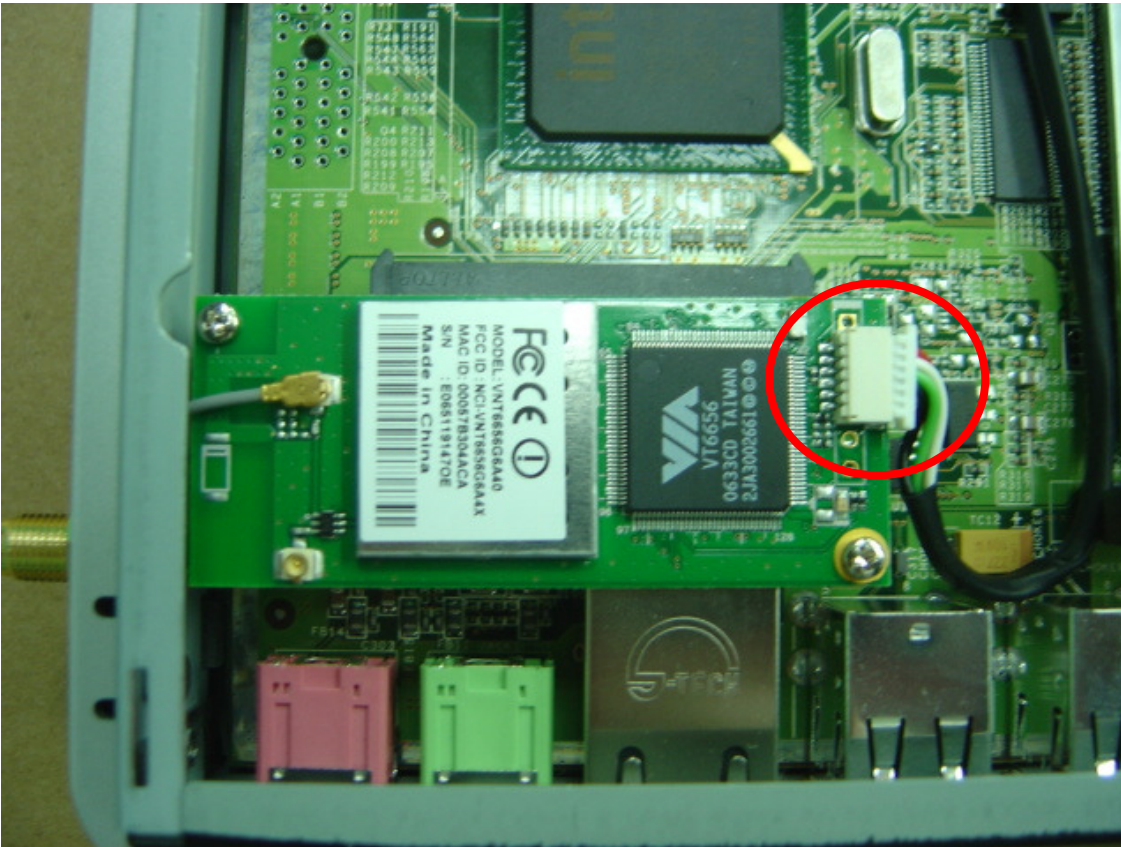
4. Screw the wireless module as below picture:



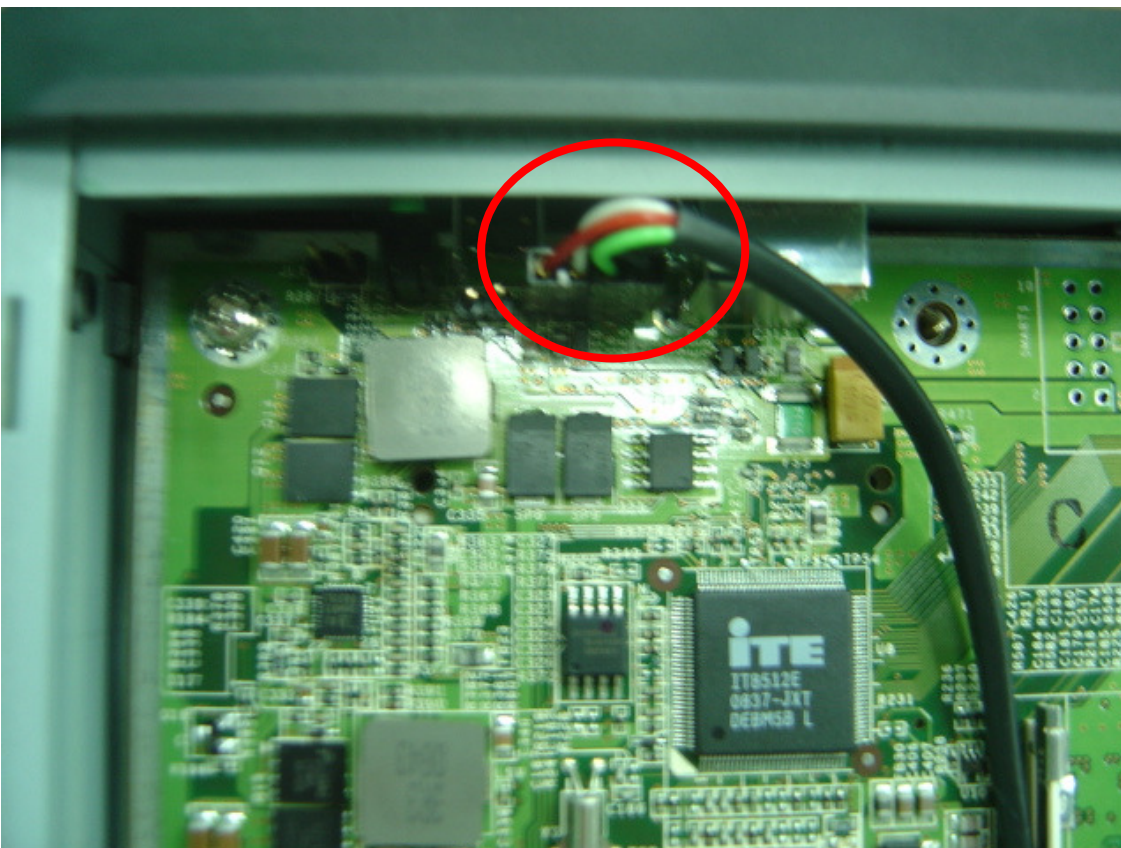


# TK-38xx-How to install the USB WLAN

5. Connect the wireless cable (Module side) as below picture:

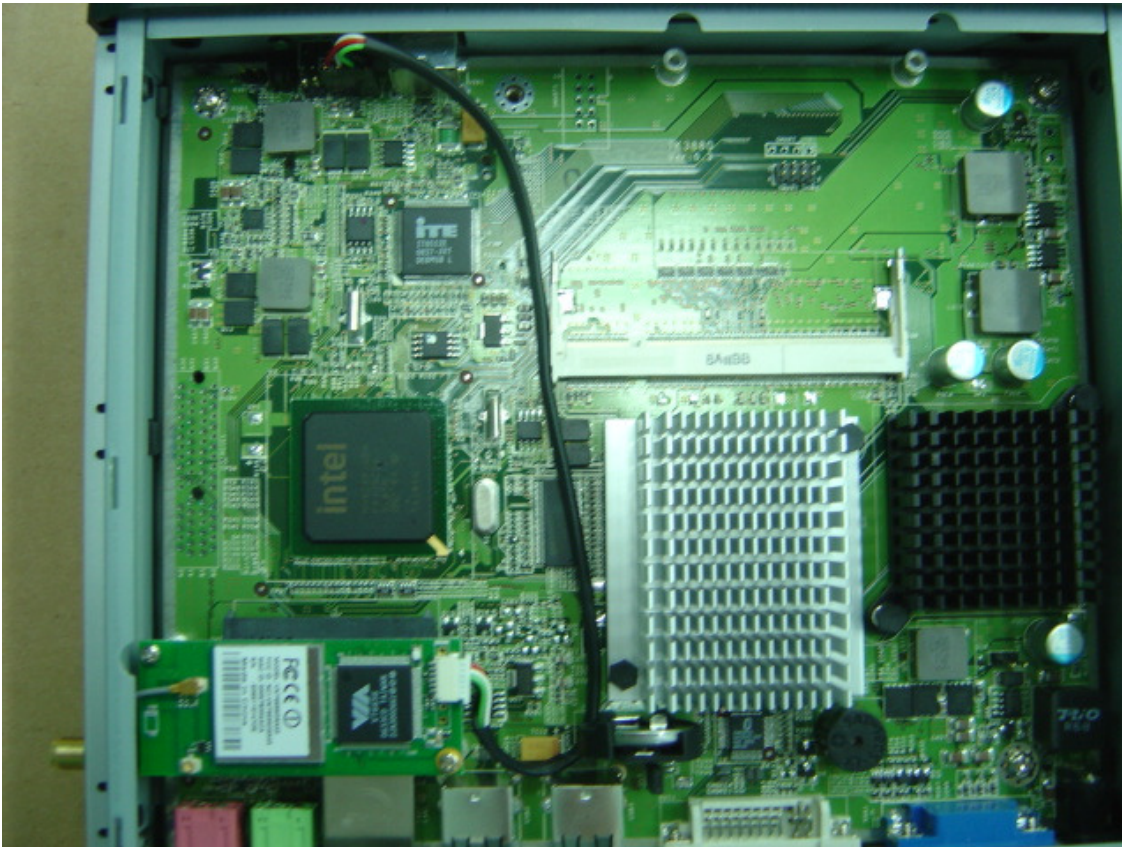


6. Connect the wireless cable (Board side) as below picture, please note the red line direction:



# TK-38xx-How to install the USB WLAN

7. Arrange the cables as below picture:



8. Finish the assembly: